



Berkshire Tennis Club of the Year 2025  
LTA Club of the Year National Finalist 2026

# Wargrave Tennis Club

## Club Objectives and Goals

OGAM Version 12 Updated and Approved 13<sup>th</sup> April 2026

# Club Objectives and Goals v12

**OBJECTIVE** – To advance the game of tennis\* in Wargrave and the surrounding area; by encouraging and supporting more players, of all ages and abilities, to play better competitive or social tennis; in an environment that is fun, safe and inclusive (\* Tennis to include padel and pickleball formats).

**GOALS** - 1) Grow and retain membership at 500-540+ level\*\* (Adults 320+ / Juniors 180+) in line with our improved facilities and catchment area. 2) Keep our membership happy, with satisfaction levels at +80% via AGM survey. 3) Manage Club finances over a 30+ year cycle to ensure we have adequate funds to maintain and improve our facilities, while holding reserves to always match 1 year of routine expenditure.



Competitive Adult Play



Improving Facilities



Social Adult Play



Focus on Juniors



Membership Engagement + Promotion



Coaching & Camps

# Six Action Areas in Detail

**OBJECTIVE – To advance the game of tennis\* in Wargrave and the surrounding area; by encouraging and supporting more players, of all ages and abilities, to play better competitive or social tennis; in an environment that is fun, safe and inclusive** (\* Tennis to include padel and pickleball formats).

**GOALS - 1) Grow and retain membership at the 500-540+ level\*\* (Adults 320+ / Juniors 180+) in line with our improved facilities and catchment area. 2) Keep our membership happy, with satisfaction levels at +80% via AGM survey. 3) Manage Club finances over a 30+ year cycle to ensure we have adequate funds to maintain and improve our facilities, while holding reserves to always match 1 year of routine expenditure.**

## ACTIONS and MEASURES

**1. FACILITIES + FEES** – Maintain and improve facilities in line with membership feedback + our 30-year financial model, while keeping fees competitive for the facilities we offer. Recent investments: a) 8 x LED lights 2022; b) 4 x artificial clay 2024 and 2025; c) 1 x padel for 2025, d) benches, tables, security gates and court repainting 2025. Future 2026 investments to include a clubhouse extension and a 2<sup>nd</sup> padel court\*\*\*.

**MEASURES:** 1) +80% AGM satisfaction score; 2) Club capital spending tracked over 30+ year cycle with reserves each year never lower than the value of one year's routine annual expenditure; 3) Retain membership numbers at the 500-540+ level.

**3. ADULT COMPETITIVE PLAY** - Encourage regular competitive play with team tennis, Club box leagues and tournaments (including padel and pickleball formats), with good support from our Head Coach, e.g. play for teams, guide team practice.

**MEASURES:** 1) 20+ teams in Berk leagues; 2) 1st teams in leagues 1 or 2; 3) competitive player satisfaction +80%; 4) 80+ in Club tournament; 5) Nos of strong new players.

**5. FOCUS ON JUNIORS** - Bring greater focus to junior tennis by encouraging younger players of all ages and abilities, with strong support from our Head Coach, e.g. teams in Berkshire junior leagues and competitions, run regular internal competitions, fun and active junior club sessions, and weekly coach-led sessions for older juniors.

**MEASURES:** 1) 4+ teams in Berk league; 2) 4+ internal annual fun competitions; 3) 60+ at Friday sessions; 4) junior parent satisfaction +80%. 5) 180+ junior members.

**2. MEMBERSHIP + PROMOTION** – Retain members with improved facilities, good club management, good communication + renewal discounts. Attract new members by promoting club benefits through our website, social media, local press stories, and informal Open Days. Encourage non-members who have coaching to join us with a 15% coaching discount. Maximise the appeal of new formats such as Pickleball and Padel.

**MEASURES:** 1) Membership at 500-540+ level by the end of September each year; 2) Newsletters to members x 12+ per year; 3) Local media x 10 per year; 3) Open Day x 1; 4) Website / FB metrics; 5) Court usage data.

**4. ADULT SOCIAL PLAY** – Support social tennis for members of all abilities with regular social tournaments and events e.g. cardio tennis sessions, rusty rackets, and monthly competitions. To include pickleball and padel formats from May 2025.

**MEASURES:** 1) 7-8 x weekly club sessions including pickleball; 2) 2-4 x social tournaments per year; 3) social player satisfaction +80%; 4) 320+ adult members.

**6. CLUB COACHING** – Head Coach to work with the committee to continue to energise and grow membership by providing great coaching for all ages and abilities, including dynamic group sessions, holiday camps, plus a range of private coaching options.

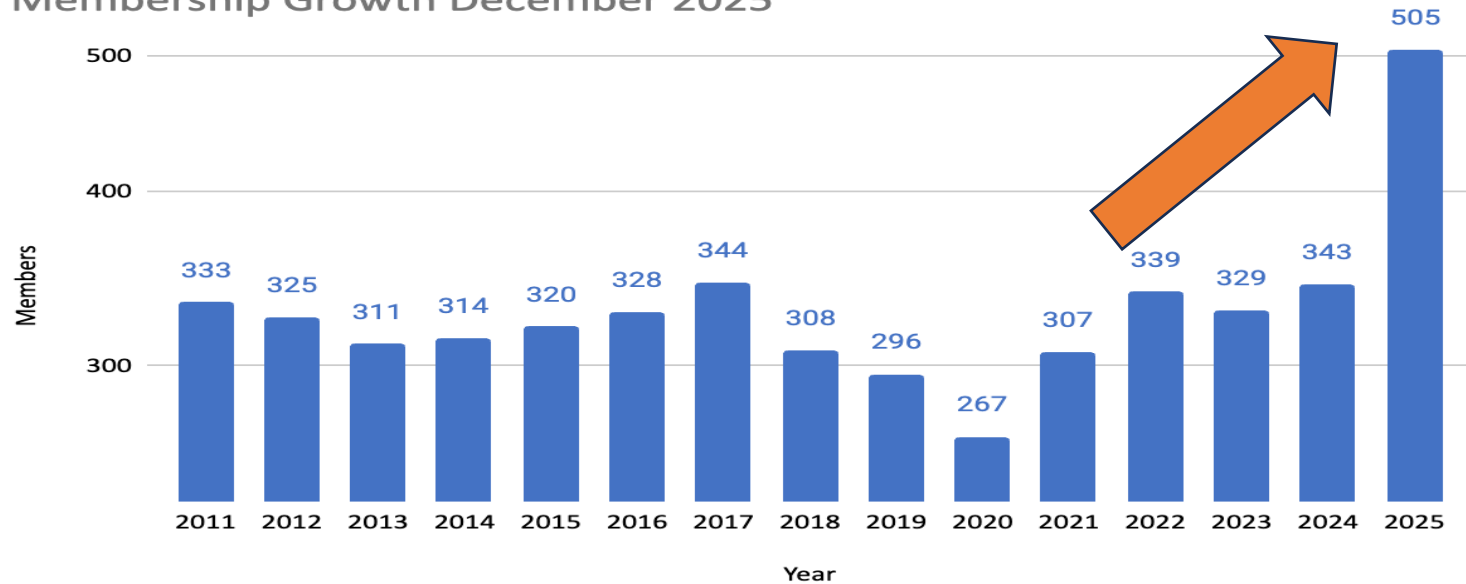
**MEASURES:** 1) Over 80% happy with coaching (AGM survey); 2) healthy coaching numbers and income; 3) growth in membership numbers / non-members fees.

\*\* Upper limit on membership approximately 585-650 (65 members x 9/10 courts). Target membership of 540, based on numbers reached by 30th September 2026-2028, with baseline membership of 500 from 2029 onwards. The 30<sup>th</sup> of September is our financial year end. \*\*\* Any future investments over £20k are subject to approval by a member's AGM/EGM.

# Retain and Grow Membership

- Year end membership 31<sup>st</sup> March 2026 = 525 (340 adults, 185 juniors)
- + 56% in membership numbers vs Sep 2024 and +71% vs Sep 2021
- 190 new members since 1<sup>st</sup> April 2025 (127 adults, 63 juniors)
- The average age of new members is 7 years lower than existing members

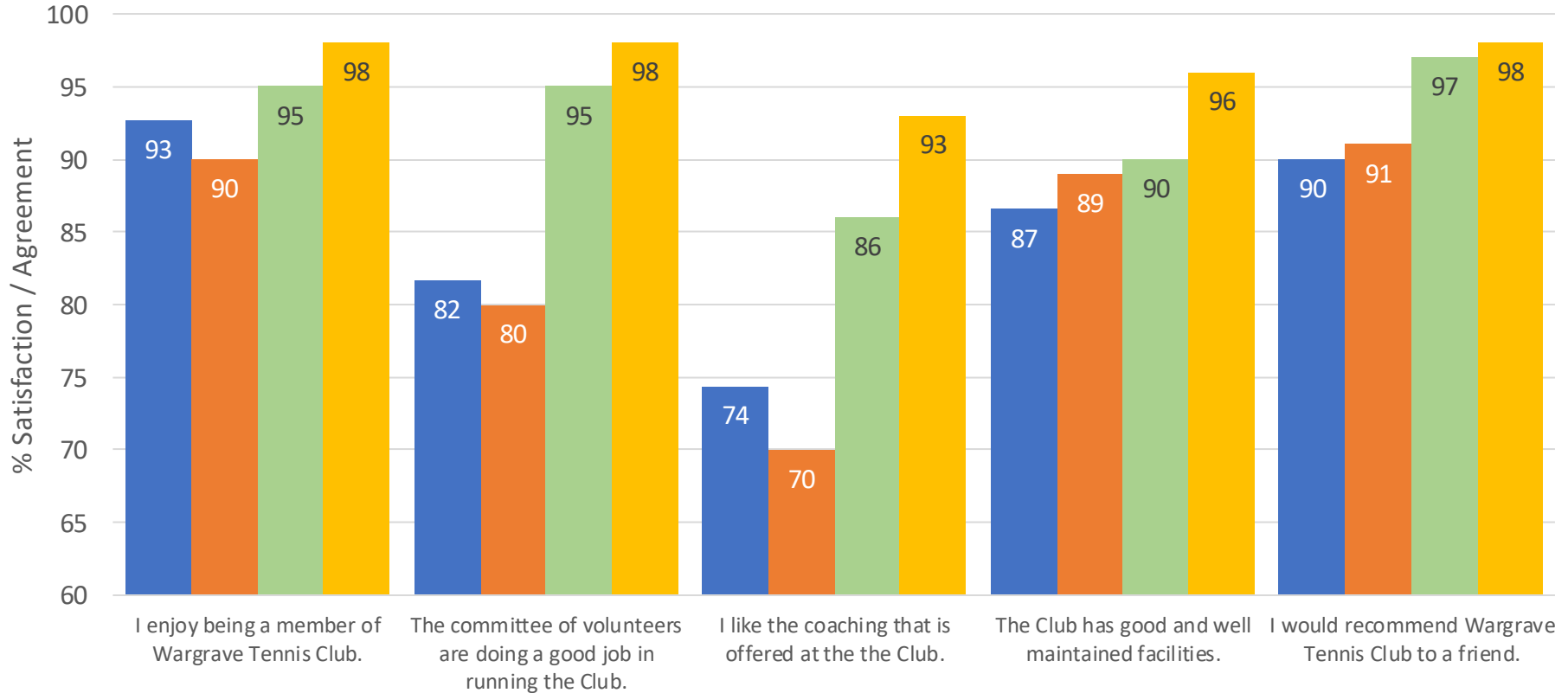
Membership Growth December 2025



# Keep Members Happy

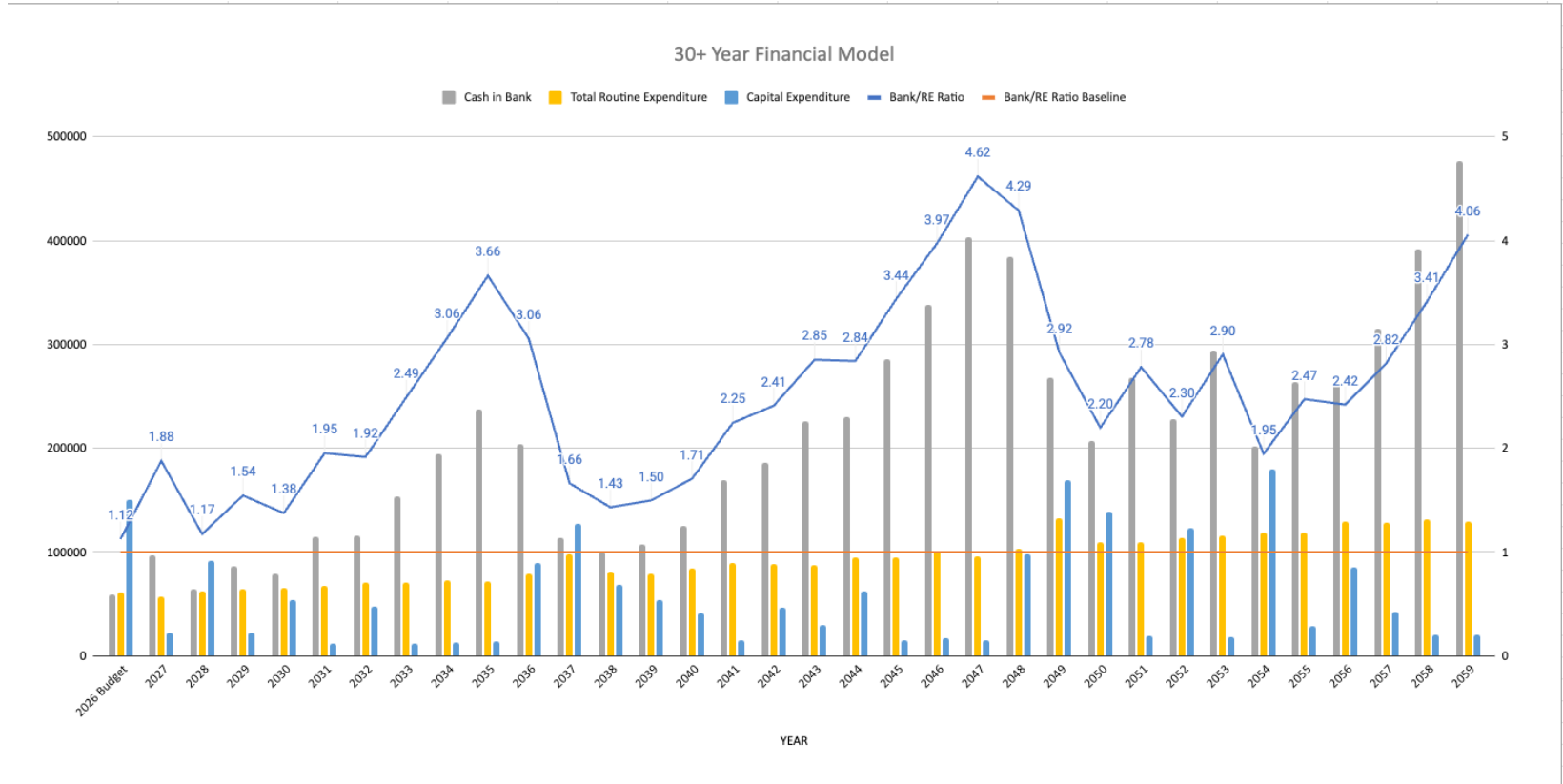
*“Satisfaction ratings have improved over the past four years”.*

■ 2022 ■ 2023 ■ 2024 ■ 2025



# Manage the Financials

Club financial forecast over the next 30 years, including investment in a second padel court and clubhouse extension in 2026 with lifetime replacement of all assets. Club income grew by 46% in 2025 to £77k and is forecast to rise to £114k in 2026, driven by stronger membership numbers and increasing income from coaching and padel court hire.



# Our Progress Since 2021

WTC Sep 2021



## Changes Since September 2021

- Agreement to advance tennis + grow membership
- Adoption of annual surveys and online voting
- Introduction of 30-year financial model
- Investment in LED floodlights x 8 courts in 2022
- Adoption of the Clubspark system from 2022
- Move to a direct coaching model 2023
- Installation of artificial clay x 2 courts 2024
- Trial tournaments for pickleball tennis 2024
- Membership growth of +70% from 305 to 523
- Ratio from 38 per court to 58 per court (norm for most large clubs is 65-70 members per court).

## Changes and Highlights for 2025

- Two further artificial clay courts on 3 and 4
- 1 x Padel court with rates for members from £10 an hour
- Pickleball show court + lines on a further two courts
- New club website + better social media coverage
- New security gates to enhance child safety
- Padel and pickleball tournaments + LTA junior tournaments
- Success for men's and ladies teams / men now in Div 1
- +34% year-on-year membership growth (Sep to Sep)
- Current membership Feb 2026 is 523 (+56% vs Sep 24)
- 338 adults and 185 juniors under 18

WTC Sep 2025



# Committee Priorities for 2026

## 1. Build a Bigger / Improved Clubhouse

More social space, better changing facilities, improved member experience.

## 2. Construct a Second Padel Court

Supports coaching demand and generates income toward clubhouse investment.

## 3. Strengthen Social Play & Community

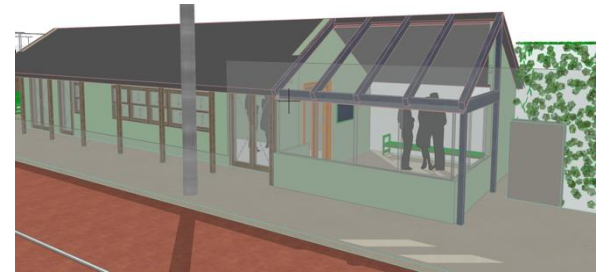
More social evenings, revamped social play, and support for an even stronger inclusive culture.

## 4. Improve Member Experience with Digital Tools

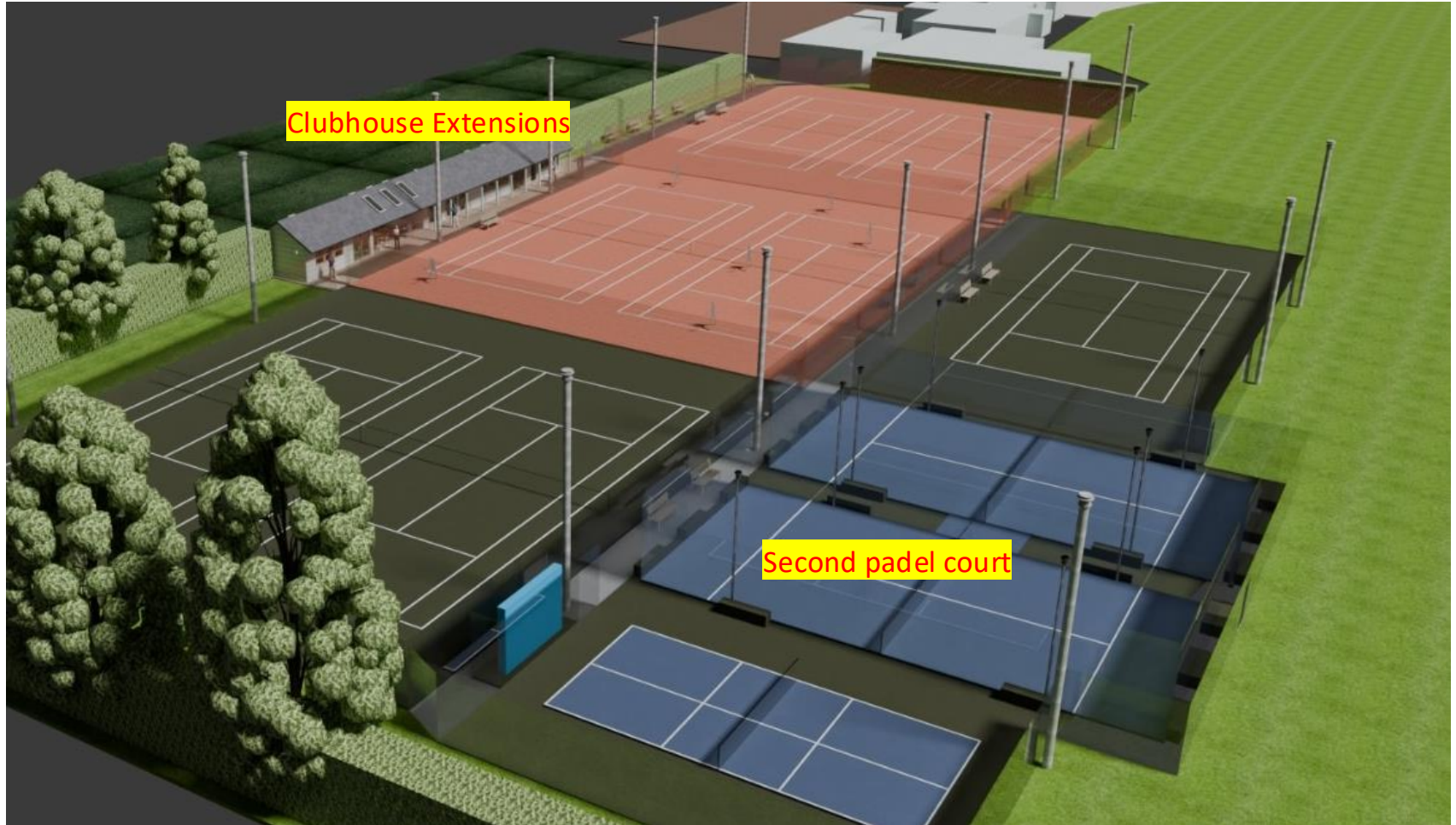
Better software to enhance the arranging of matches, organising and signing up to competitions, improving inter-player comms, plus building an even stronger club community.

## 5. Support Player Development

Stronger junior programme, better beginner pathways, improved grounds & courts.



# Future Investment Plans for 2026



# Feedback on Padel



- **70%** of our members have tried the new padel court, and nearly **50%** are playing both padel and tennis.
- **79%** members are pleased we made the investment, and only **3%** disagree.
- **57%** found it “relatively easy” to book the padel court and **74%** think our charges are good value (only **2%** and **5%** disagreed).
- **41%** of members say they have joined the new padel ladder.
- **85%** say that padel “really adds value” to the Club and only **2%** disagree.
- **98%** support committee EGM proposal to borrow and invest **£90k for second padel court** (EGM 3-18 March / 103 voted with 101 in support)

# Clubhouse Extensions 2026



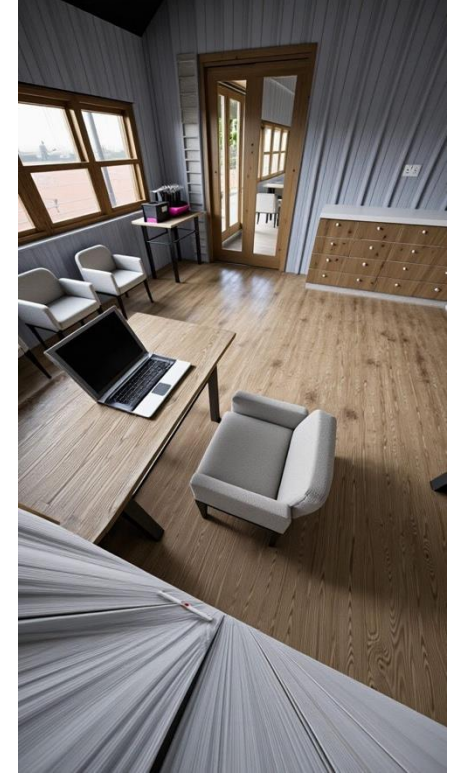
# Clubhouse Extensions 2026



Dedicated Adult Social Space



Covered Terrace



Space for Coaching